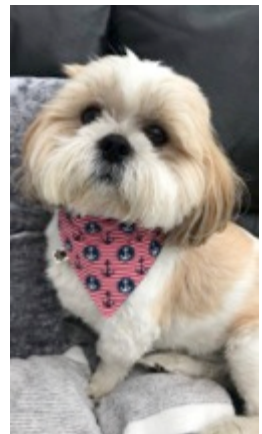




## **The Big Challenge 2018**



## Welcome to Petsy & Pooch

We are Clara, Daisy, Holly & Shreya – a group of Y8 girls who are taking part in an enterprise competition called “The Big Challenge” with Tapton School.

Our dog bandanas are handmade by us, machine washable and reversible. You can find our products in Crosspool Pet Shop, Broomhill Vets and at various local markets and events. Alternatively, you can pick your own fabrics and we will make your dog a product to order.

**To Wear:** The end of the dog collar slides through the top of the bandana to ensure an easy, comfortable fit for your dog

### Pricing & Sizing:

Size Description	Diameter (cms)*	Price**
Extra Small	18.5	<b>£2.99</b>
Small	23.5	<b>£2.99</b>
Medium	28.5	<b>£3.50</b>
Large	33.5	<b>£3.50</b>

*\* The diameter is the distance along of the top of the bandana*

*\*\* For delivery, additional charges may apply – see terms and conditions*

### You can order in various ways:



email us for an order form at: [petsyandpooch@gmail.com](mailto:petsyandpooch@gmail.com)



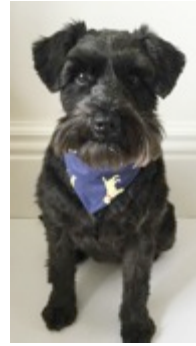
Call or text us on 07914 664 709 (in the evenings and weekends) if you'd like to discuss anything about your order



You can also find us on Facebook at *Petsy & Pooch* - send us a message

## The Finished Product

For your dog to wear the bandana, an open end of the dog collar is passed through a loop at the top as shown below. The bandana is worn as shown below (kindly modelled by Louis & Betty below). The product is not suitable for dogs that do not have a collar.



The product comes wrapped in a cellophane pouch and each bandana has a small dog paw tab attached (see examples of a finished product below). There is a Petsy & Pooch logo sticker on each wrapper that helps to make this a lovely gift item.



## Fabrics & Designs

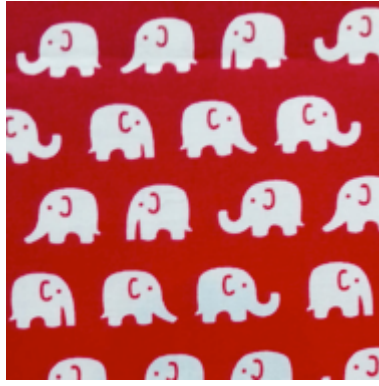
The fabrics that we currently have in stock are shown on the following pages. We also have a range of pre-made designs that are available immediately.



1 Hearts & Stars



2 White Elephants on Red



3 Denim



4 Scottie Dog on black dots



5 Tartan



6 Scottie Dog on white dots



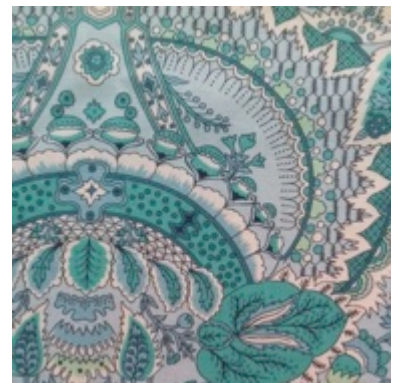
7 White Polka Dots on Pink



8 Flowers on Navy Blue



9 Turquoise Patterned



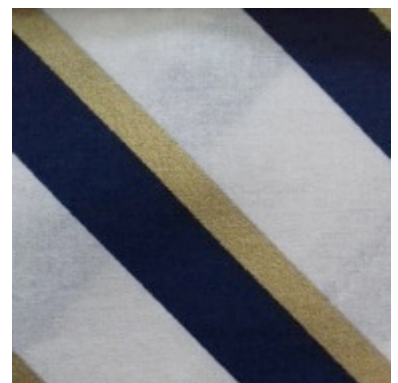
10 Scottie Dogs on Red



11 Sea Dog



12 Diagonal Stripes





13 Pink Flamingos



14 Tropical Toucan



15 Pineapples on Pink



16 Green Patterned



17 Paisley & Chintz



18 White Dots on Navy Blue



19 Busy Boats



20 Flowers on Light Blue



**Christmas Range (Can be mixed with non-Christmas Patterns)**

C1 Scotties on Red



C2 Christmas Trees on Red



C3 Grey Hearts



C4 Reindeers on White



C5 Reindeers on Grey



C6 Red Hearts



**More Christmas fabrics on their way... Watch this space!**